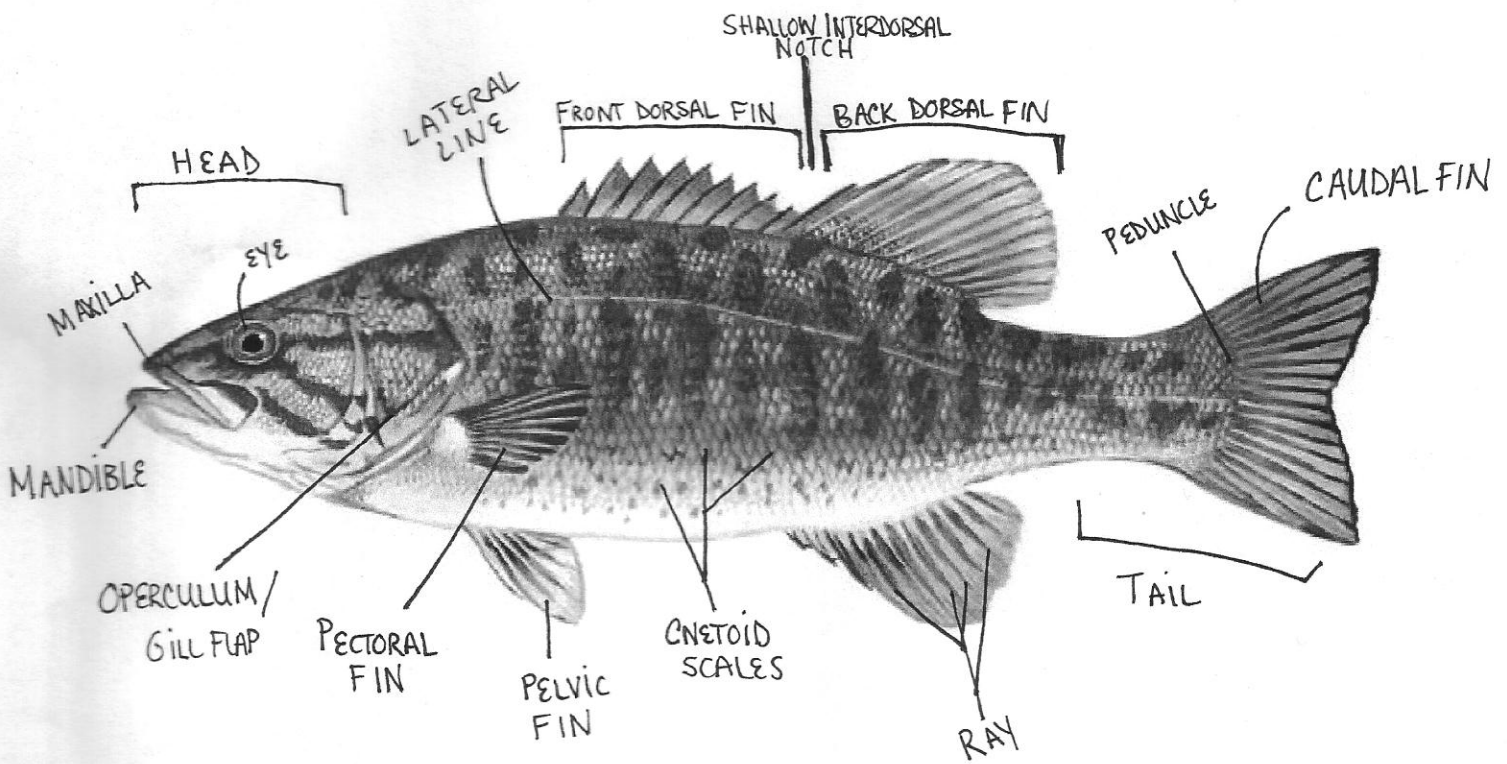


Name KEY

Date _____

Micropterus dolomieu
Smallmouth Bass

Draw a line and label each of the parts of the smallmouth bass listed below. Be sure to include arrows for small points of identification.



- ✓ Pectoral Fin
- ✓ Caudal Fin
- ✓ Tail
- ✓ Maxilla
- ✓ Head
- ✓ Back Dorsal Fin

- ✓ Mandible
- ✓ Cnetoid scales
- ✓ Pelvic Fin
- ✓ Front Dorsal Fin
- ✓ Peduncle
- ✓ Lateral Line

- ✓ Shallow Interdorsal Notch
- ✓ Operculum/Gill Flap
- ✓ Eye
- ✓ Ray