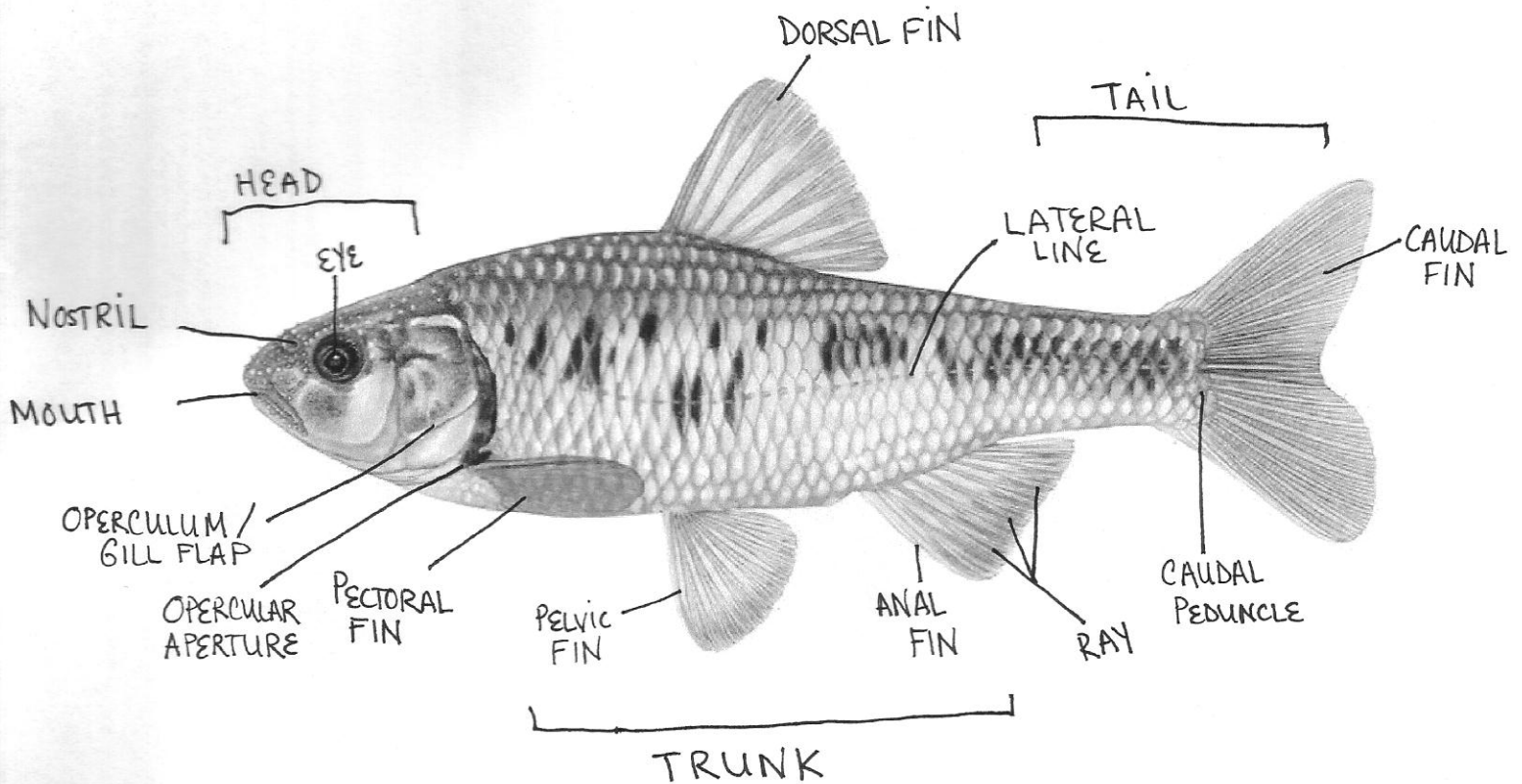


Name KEY

Date _____

Luxilus chrysocephalus
Striped Shiner

Draw a line and label each part of the fish from the list below. Be sure to use arrows to identify small parts.



- ✓ Caudal Fin
- ✓ Lateral Line
- ✓ Anal Fin
- ✓ Caudal Peduncle
- ✓ Ray
- ✓ Tail

- ✓ Head
- ✓ Trunk
- ✓ Nostril
- ✓ Eye
- ✓ Mouth

- ✓ Operculum/Gill Flap
- ✓ Pectoral Fin
- ✓ Opercular Aperture
- ✓ Pelvic Fin
- ✓ Dorsal Fin